

OUR JOURNEY

New Mickle Baptist Church (NMBC) is a historic church in Camden, NJ, founded in 1916. In September 1919, it was incorporated and continued to grow. Due to the fast growth of the congregation, New Mickle Baptist Street Church purchased and moved to a larger location at 4th and Benson Streets and changed its name to New Mickle Baptist Church. This church and annex building was built in 1868.

New Mickle Baptist Church's roots are deep in the African American Baptist religious experience, and our traditions are deep, lasting, and permanent. God has superintended our pilgrimage through the days of slavery, the days of segregation, and the long nights of racism. It is God who gives us the strength and courage to continuously address injustice as a people, as a congregation, and as a community.

For over 106 years, we have been blessed to minister and save souls in the South Camden area. Today, with the strength of the Lord, let's continue to pray and Power On, Power Up, and Power Through!

"Bring ye all the tithes into the storehouse, that there may be meat in mine house, and prove me now herewith, saith the LORD of hosts, if I will not open you the windows of heaven, and pour you out a blessing, that there shall not be room enough to receive it."

—MALACHI 3:10 KJV

WAYS TO GIVE



In-Person



Online



Cash-App



Zelle


EVERY GIFT MAKES A DIFFERENCE!


New Mickle Baptist Church

Rev. Horace E. Kinlaw, Sr. Pastor

newmicklebaptist.org 

856.365.1107 

416 S. Fourth Street 
Camden, NJ 08103

P.O. Box 1995 
Camden, NJ 08101



NEW MICKLE BAPTIST CHURCH
CAPITAL CAMPAIGN

PHASE II
2022 - 24

WHY PHASE TWO

We were blessed to complete Phase One of our capital campaign before the COVID-19 pandemic. However, unanticipated difficulties increased the project's final cost to \$253,500. To better improve the safety, comfort, and good stewardship of the church for our neighborhood and community, we must judiciously widen the scope of Phase Two. With the sanctuary and fellowship hall in focus, we plan to address a series of emergency and cosmetic improvements (see breakdown below).

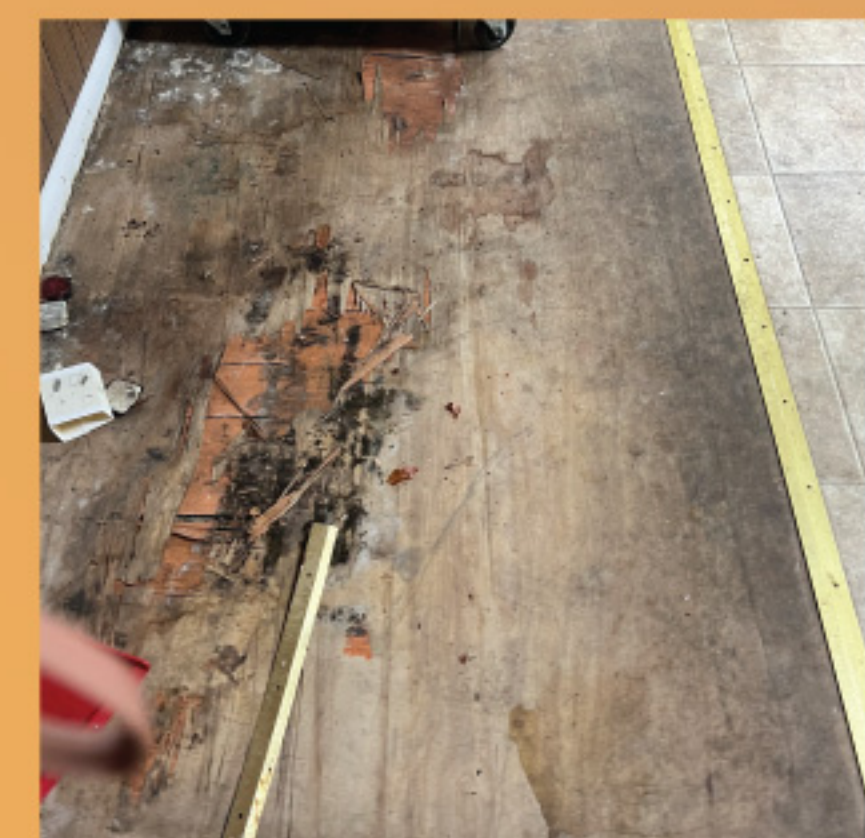
The cost to improve our air quality and bring our electrical wiring up to code is higher than anticipated. But overall, we'll save monthly by replacing antiquated systems while gaining safety and peace of mind.

As we collectively sacrifice for Phase Two, please remember that you're building the infrastructure of our church's ministries, worship experience, and longevity. We'll continue to give in God's glory, while celebrating over a century of perseverance.

As proud members of New Mickle Baptist Church, let's remain steadfast in our rich history and legacy of faith and service. Our ancestors entrusted us with a beautiful building. It's our duty to upkeep a platform of inspiring worship, spiritual nourishment, meaningful service, and genuine community. You're called once again to venture out in faith so that our church can continue to "Power On, Power Up, and Power Through!"

COST BREAKDOWN

Church HVAC system	\$60,000
Replace old wiring	\$30,000
Fire suppression system (Annex & Church)	\$40,000
Remodel sanctuary storage rooms	\$5,000
Replace electrical panels & rewiring	\$35,000
Update audio/visual system	\$6,000
Replace carpet in sanctuary	\$20,000
Remodel annex (Replace floors, ceiling tiles & walls)	\$26,000
Replace front doors (Church & Annex)	\$5,000
Remodel kitchen (commercial kitchen hood & industrial sink)	\$26,500



TOTAL
GOAL

\$253,500